

StiffClip® TD

Uplift Connector

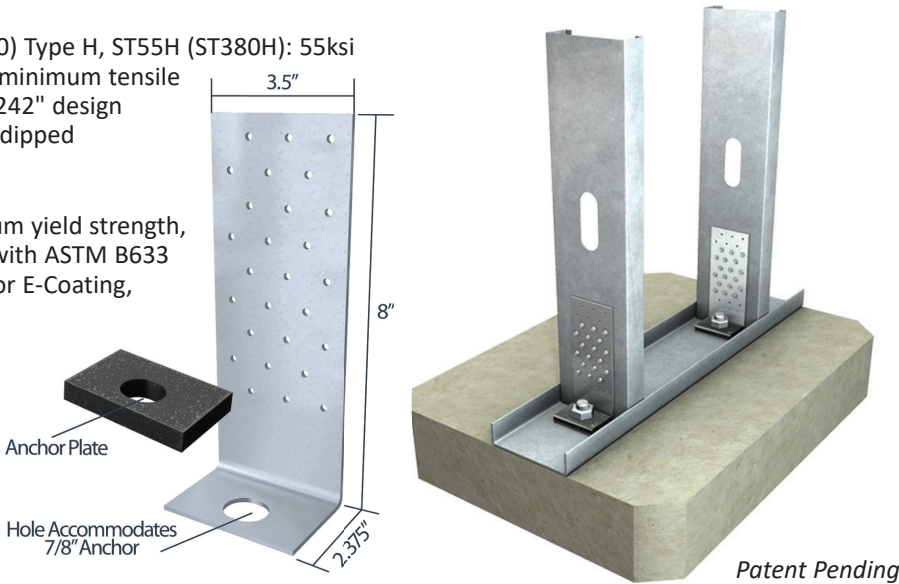
The Steel Network, Inc.
www.steelnetwork.com
1-888-474-4876



Material Composition

Clip: ASTM A1003/A1003M Structural Grade 55 (380) Type H, ST55H (ST380H): 55ksi (380MPa) minimum yield strength, 70ksi (480MPa) minimum tensile strength, 118mil minimum thickness (10 gauge, 0.1242" design thickness) with ASTM A653/A653M G90 (Z275) hot dipped galvanized coating.

TD Plate: ASTM A36/A36M: 36ksi (250MPa) minimum yield strength, 58-80ksi (400-550MPa) minimum tensile strength, with ASTM B633 Type II Yellow Zinc Coating, Paint, Powder Coating, or E-Coating, or approved equivalent.



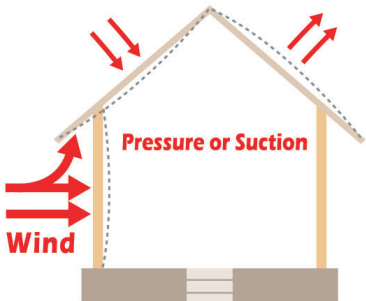
StiffClip TD Allowable Loads

StiffClip® TD, Recommended Allowable Load for Steel Framing (lbs): F3				
Stud		w/12 #12 Screws	w/18 #12 Screws	w/27 #12 Screws
Thickness Mils (ga)	Yield Strength (ksi)			
33 (20)	33	2,256	3,384	5,076
33 (20)	50	3,264	4,896	7,344
43 (18)	33	3,360	5,040	7,560
43 (18)	50	4,860	7,290	9,826
54 (16)	33	4,728	7,092	9,826
54 (16)	50	6,828	9,826	9,826
68 (14)	50	9,324	9,826	9,826
97 (12)	50	9,324	9,826	9,826
Maximum Allowable Clip Load		9,826		

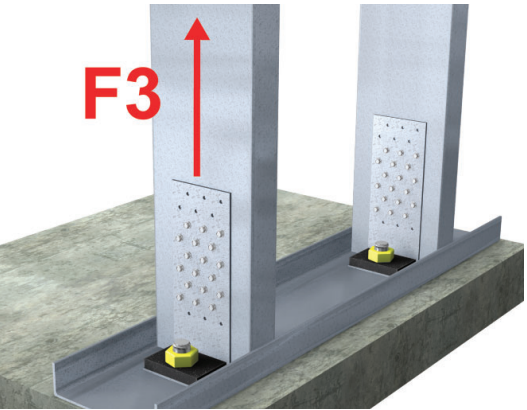
StiffClip® TD, Recommended Allowable Load for Wood Framing (lbs): F3						
Fastener Type	Douglas Fir / Southern Pine			Spruce Pine-Fir / Hem-Fir		
	Quantity of Fasteners			Quantity of Fasteners		
	12	18	27	12	18	27
10d	2,846	4,268	6,403	2,465	3,698	5,547
16d	3,279	4,919	7,378	2,838	4,257	6,386
#12 Wood Screw	3,451	5,177	7,766	3,046	4,569	6,854
Maximum Allowable Clip Load	10,718			10,718		

Notes:

- Fasten within 1.25" from the angle heel using the existing anchor hole.
- Guide holes are in place for fastener installation efficiency. The number of fasteners are determined by the designer.
- Attachment to stud is made with up to 27 #12 screws, symmetrically placed.
- StiffClip TD resists vertical uplift loads.
- Allowable loads for steel framing have not been increased for wind, seismic, or other factors.
- Allowable shear for nails is increased 60% for wind and seismic loads in wood framing.
- For wood, moisture content > 19%. Consult The Steel Network, Inc. for reductions to values.



Load Direction

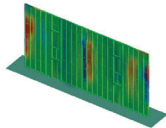
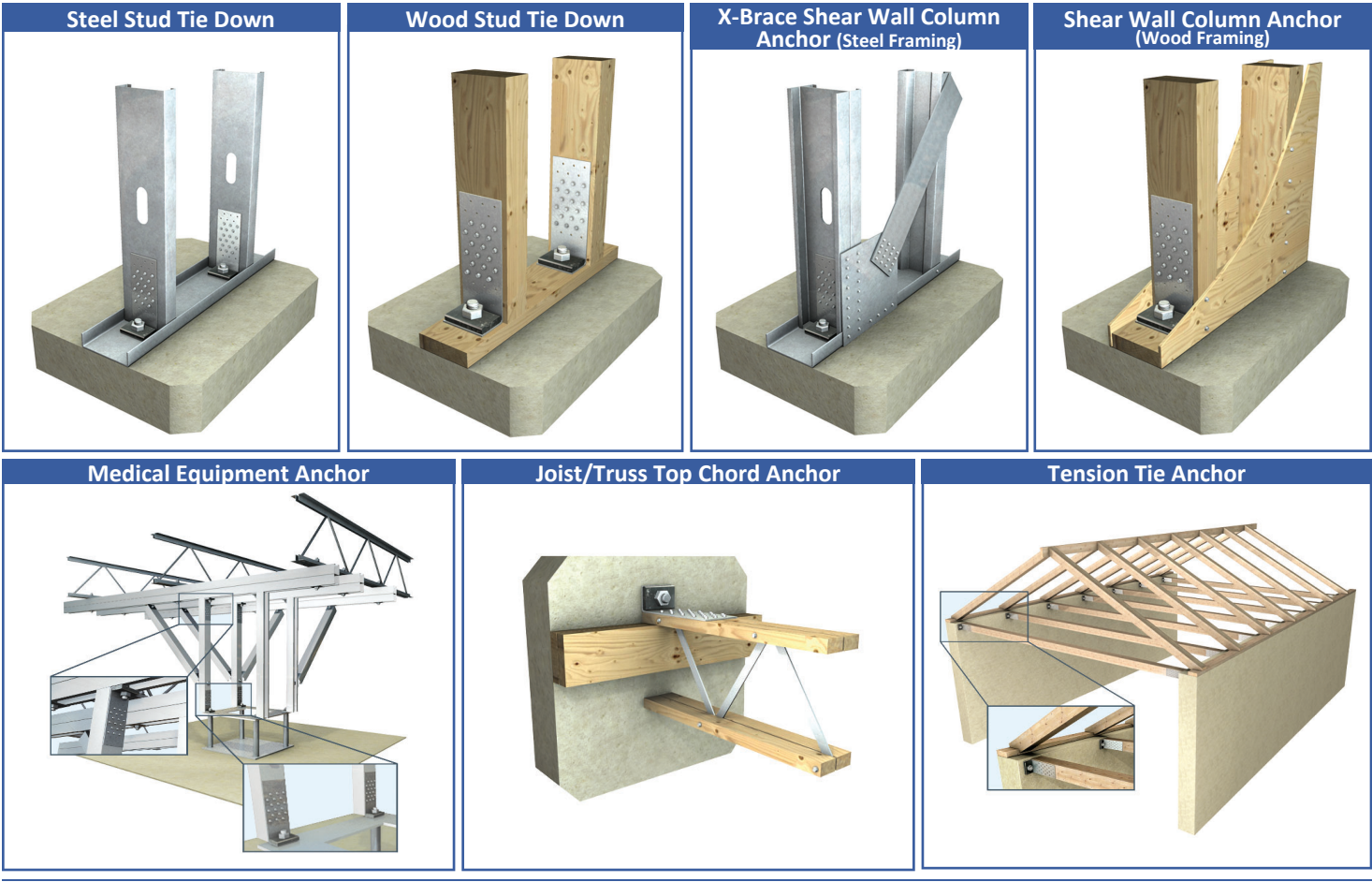


Nomenclature

StiffClip TD is available in one size and utilizes a 0.75” plate on top of the 2.375” leg

Designate: StiffClip® TD

Example Details



StiffClip TD Series
Blast and Seismic Design Data
www.steelnetwork.com

**** For more information or to review a copy of this report, please visit our website at <http://www.steelnetwork.com/Site/TechnicalData>**